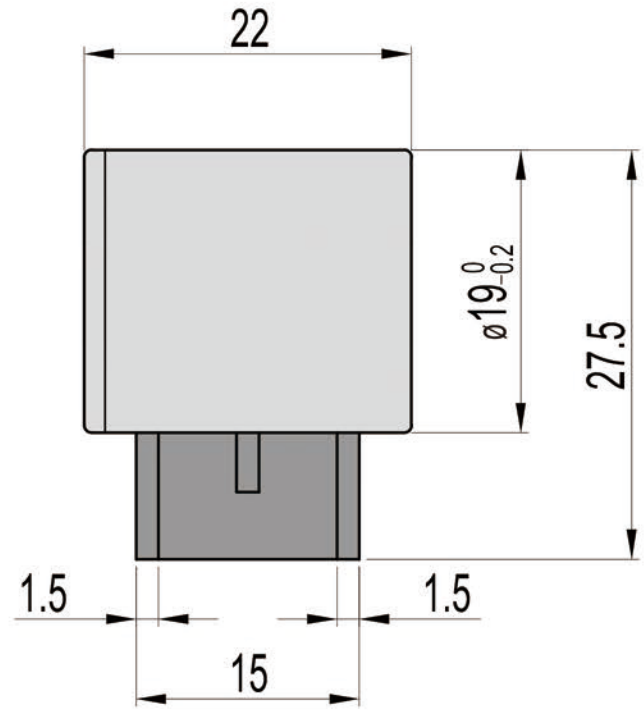
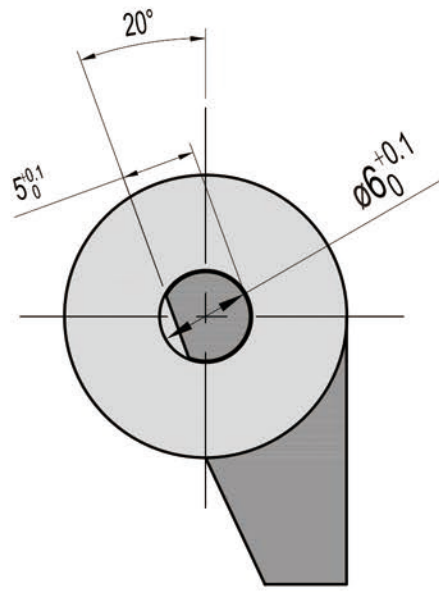
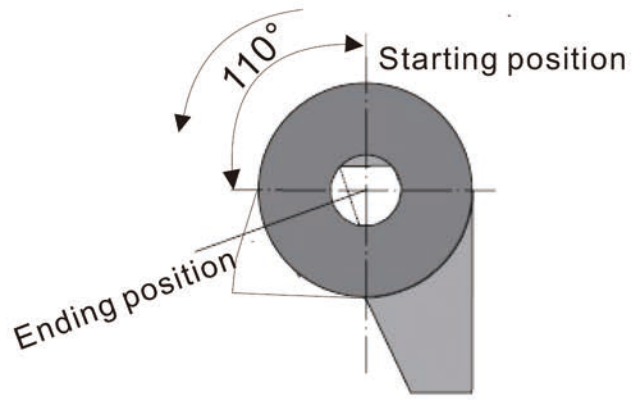


RH-P19A0



Instructions



Model	Torque of undamping direction	Damping direction	
RH-P19A0-L902	0.9±0.1N·m 9±1 kgf·cm	0.3N·m 3kgf·cm	Anticlockwise
RH-P19A0-L113	1.1±0.1N·m 11±1 kgf·cm	0.4N·m 4kgf·cm	Anticlockwise
RH-P19A0-L133	1.3±0.1N·m 13±1 kgf·cm	0.5N·m 5kgf·cm	Anticlockwise

FIDO Motion Control

RH-P19
Damper drawing